

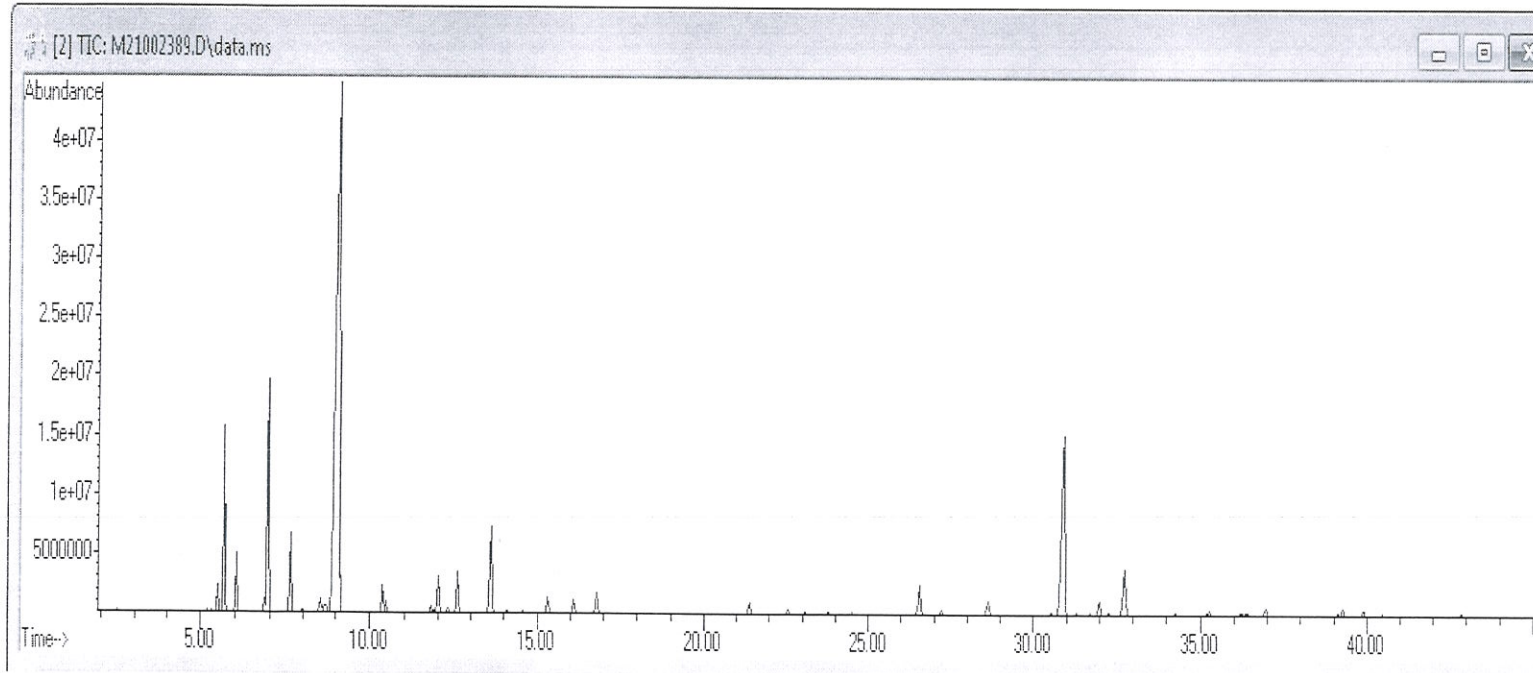


T.C.  
MUĞLA SITKI KOÇMAN UNIVERSITY  
FOOD ANALYSIS APPLICATION and RESEARCH CENTER

ANALYSIS REPORT

Analyzed by : Dr. Ibrahim KIVRAK  
Date of Analysis : 28.12.2021  
Sample Type : Essential Oil  
Sample Name : *Salvia triloba*  
Producer Name : GOYA BOTANICALS  
Instrument Used : Agilent 7890 GC-5975 MSD  
Sample No : M21002389

Chromatogram *Salvia triloba*



R. Time	Name	Peak Area %
3,685	cis-Salvene	0,013
5,482	$\alpha$ -Thujene	0,638
5,667	$\alpha$ -Pinene	4,897
6,021	Camphene	1,570
6,845	$\beta$ -Thujene	0,430
6,955	$\beta$ -Pinene	8,101
7,622	$\beta$ -Myrcene	2,515
8,003	$\alpha$ -Phellandrene	0,070
8,537	4-Carene	0,595
8,690	p-Cymene	0,479
9,072	Eucalyptol (1,8-Cineole)	47,654
10,020	cis- $\beta$ -Ocimene	0,029
10,376	$\gamma$ -Terpinene	1,014
10,481	Sabinene hydrate	0,396
11,801	$\alpha$ -Terpinolene	0,278
12,012	$\beta$ -Thujone	1,609
12,307	Linalool	0,247
12,595	$\alpha$ -Thujone	1,712
13,610	Camphor	4,095
14,074	Sabinol	0,153
15,321	Borneol	0,778
16,101	Terpinen-4-ol	0,615
16,792	Unidentified	0,957
21,396	Linalyl acetate	0,582
22,562	Bornyl acetate	0,268
23,783	Thymol	0,096
26,560	$\alpha$ -Terpinene	1,575
27,237	$\alpha$ -Cubebene	0,222
28,628	Copaene	0,723
30,921	Caryophyllene	12,533
32,002	Aromadendrene	0,781
32,743	$\alpha$ -Caryophyllene	2,614
33,133	Alloaromadendren	0,045
34,259	$\gamma$ -Muurolene	0,110
35,277	Ledene	0,355
36,223	$\gamma$ -Cadinene	0,167
36,960	$\delta$ -Cadinene	0,466
39,275	Caryophyllene oxide	0,360
39,907	D-Virdiflorol (Epigobulol)	0,258
TOTAL (%)		100,000

Comments:

Analysis of this *Salvia triloba* batch sample meets the expected chemical profile for authentic essential oil of *Salvia triloba*. No contamination or adulteration was detected.

All rights reserved. Any publishing, copying, use, dissemination, or distribution of this report, including online, without the express written permission of MUGAM is strictly prohibited.

