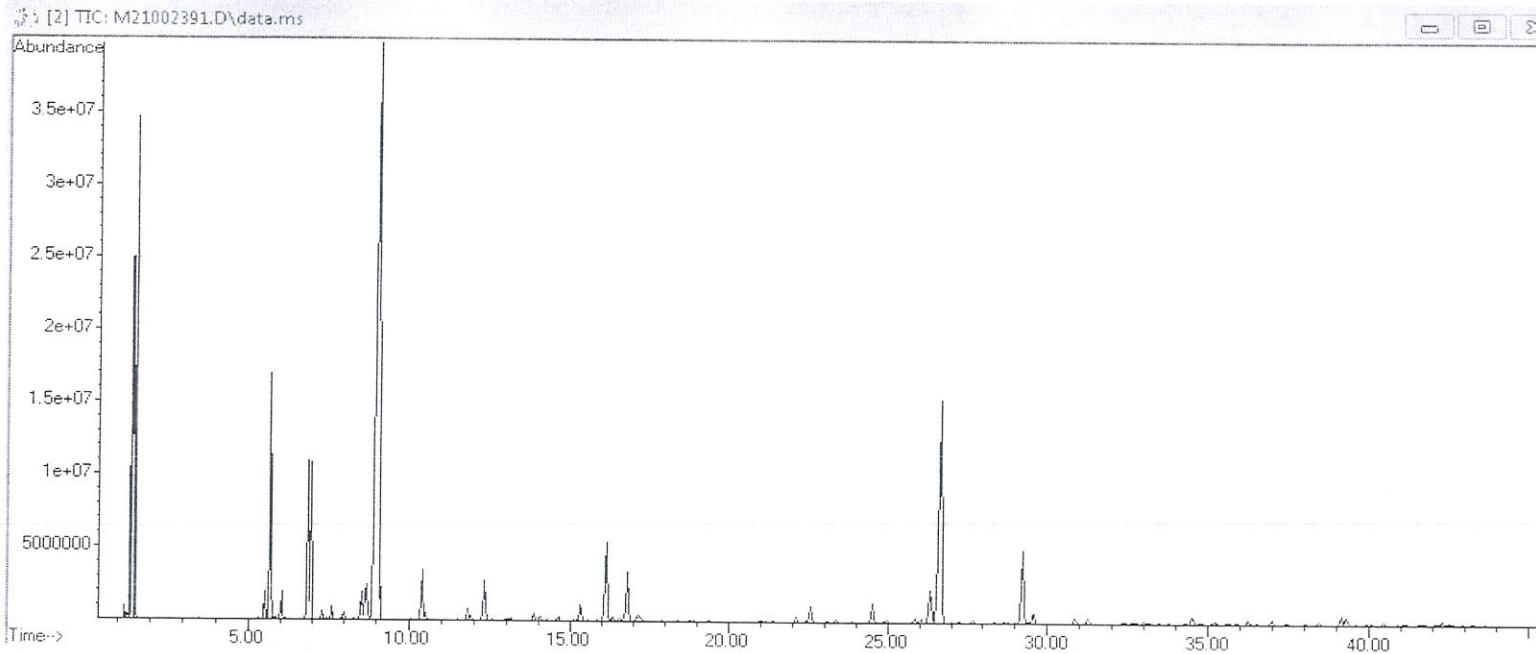


T.C.
MUĞLA SITKI KOÇMAN UNIVERSITY
FOOD ANALYSIS APPLICATION and RESEARCH CENTER

ANALYSIS REPORT

Analyzed by : Dr.Ibrahim KIVRAK
Date of Analysis : 28.12.2021
Sample Type : Essential Oil
Sample Name : *Laurus Nobilis*
Producer Name : GOYA BOTANICALS
Instrument Used : Agilent 7890 GC-5975 MSD
Sample No : M21002391

Chromatogram *Laurus Nobilis*



Comments:

Analysis of this *Laurus Nobilis* batch sample meets the expected chemical profile for authentic essential oil of *Laurus Nobilis*. No contamination or adulteration was detected.

All rights reserved. Any publishing, copying, use, dissemination, or distribution of this report, including online, without the express written permission of MUGAM is strictly prohibited.

Assoc.Prof.Dr.Ibrahim KIVRAK
Deputy Manager

Peak Report TIC

R. Time	Name	Peak Area %
5,323	Tricyclene	0,022
5,492	α -Thujene	0,630
5,678	α -Pinene	5,947
5,860	2,4(10) Thujadien	0,087
6,027	Camphene	0,670
6,862	Sabinene	4,670
6,953	β -Pinene	4,114
7,322	Unidentified	0,254
7,622	β -Myrcene	0,355
8,009	α -Phellandrene	0,277
8,546	α -Terpinene	1,048
8,687	<i>o</i> -Cymene	1,896
9,055	Eucalyptol (1-8-Cineole)	40,816
10,033	<i>cis</i> - β -ocimene	0,039
10,391	γ -Terpinene	1,698
11,510	Cymenene	0,056
11,812	α -Terpinolene	0,403
11,913	<i>trans</i> -Sabinene hydrate	0,170
12,324	Linalool	1,596
13,152	<i>p</i> -Menth-2-en-1-ol	0,158
13,853	<i>trans</i> -Pinocarveol	0,325
14,050	Unidentified	0,181
14,643	<i>cis</i> -Pinocarvone	0,190
15,334	Unidentified	0,643
16,154	Terpinen-4-ol	3,706
16,374	Myrtenal	0,215
16,827	α -Terpineol	2,304
17,168	Myrtenol	0,485
17,922	<i>cis</i> -Piperitol	0,072
19,403	Nerol	0,088
21,403	Linalyl acetate	0,047
22,134	4-Thujen-2-alpha-yl	0,294
22,578	Bornyl acetate	0,810
23,371	2-Undecanone	0,125
24,524	Unidentified	0,877
26,341	Eugenol	2,072
26,685	α -Terpinyl acetate	14,897
27,681	Nerol acetate	0,180
28,370	α -Copaene	0,117
29,230	Eugenol methyl ether	3,828
29,563	β -Elemene	0,509
30,839	β -Caryophyllene	0,339
31,233	Cinnamyl acetate	0,279
34,272	Germacrene D	0,080
34,504	Unidentified	0,386
35,193	Germacrene B	0,299
36,235	α -Amorphene	0,258
36,965	δ -Cadinene	0,210
38,438	α -Bisabolene	0,117
39,135	Spathulenol	0,449
39,283	Caryophyllene oxide	0,392
42,280	β -Eudesmol	0,320
TOTAL (%)		100,000